

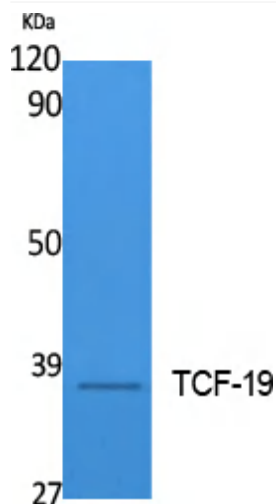


# TCF-19 Polyclonal Antibody

<b>Catalog No</b>	YP-Ab-02221
<b>Isotype</b>	IgG
<b>Reactivity</b>	Human;Mouse;Rat
<b>Applications</b>	WB;ELISA
<b>Gene Name</b>	TCF19
<b>Protein Name</b>	Transcription factor 19
<b>Immunogen</b>	Synthesized peptide derived from the Internal region of human TCF-19.
<b>Specificity</b>	TCF-19 Polyclonal Antibody detects endogenous levels of TCF-19 protein.
<b>Formulation</b>	Liquid in PBS containing 50% glycerol, 0.5% BSA and 0.02% sodium azide.
<b>Source</b>	Polyclonal, Rabbit,IgG
<b>Purification</b>	The antibody was affinity-purified from rabbit antiserum by affinity-chromatography using epitope-specific immunogen.
<b>Dilution</b>	Western Blot: 1/500 - 1/2000. ELISA: 1/20000. Not yet tested in other applications.
<b>Concentration</b>	1 mg/ml
<b>Purity</b>	≥90%
<b>Storage Stability</b>	-20°C/1 year
<b>Synonyms</b>	TCF19; SC1; Transcription factor 19; TCF-19; Transcription factor SC1
<b>Observed Band</b>	35kD
<b>Cell Pathway</b>	Nucleus .
<b>Tissue Specificity</b>	Blood,Brain,Colon,Skin,
<b>Function</b>	developmental stage:Growth regulated.,function:Potential trans-activating factor that could play an important role in the transcription of genes required for the later stages of cell cycle progression.,PTM:Phosphorylated upon DNA damage, probably by ATM or ATR.,similarity:Contains 1 FHA domain.,similarity:Contains 1 PHD-type zinc finger.,
<b>Background</b>	This gene encodes a protein that contains a PHD-type zinc finger domain and likely functions as a transcription factor. The encoded protein plays a role proliferation and apoptosis of pancreatic beta cells. Alternative splicing results in multiple transcript variants. [provided by RefSeq, Jan 2016],
<b>matters needing attention</b>	Avoid repeated freezing and thawing!

**Usage suggestions**

This product can be used in immunological reaction related experiments. For more information, please consult technical personnel.

**Products Images**

Western Blot analysis of extracts from Jurkat cells, using TCF-19 Polyclonal Antibody. Secondary antibody(catalog#:RS0002) was diluted at 1:20000 cells nucleus extracted by Minute TM Cytoplasmic and Nuclear Fractionation kit (SC-003, Inventbiotech, MN, USA).